

HOW TO CONNECT TO FILEAGO THROUGH THE LOCAL FILE SYSTEM

This document describes how to connect to FileAgo on the Cloud through the local file system or File Explorer. FileAgo uses the WebDav protocol for this purpose.

Please see the following sections for description on how to access FileAgo on a specific platform:

- 1. Set up WebDrive on Windows**
- 2. Set up WebDrive on Linux**
- 3. Set up WebDrive on Mac**

1. Instructions to set up FileAgo WebDrive on Windows

From within FileAgo user settings, please set your own endpoint name. The URL to access the FileAgo installation, is the URL to your FileAgo installation followed with: “/webdrive/myEndPointName”:

`https://myfolder.fileago.com/webdrive/myEndPointName`

Username: my_username

Password: my_password

On Windows 10 and below do the following:

1.1 NOTE:

- 1.1.1 **If you need to upload files larger than 50MB follow instructions in Section 1.4 before connecting using Section 1.2.**
- 1.1.2 **If you need to run FileAgo WebDrive as a development server under HTTP, follow instructions in Section 1.3 before connecting using Section 1.2.**

1.2 Connecting the WebDrive on Windows

To connect FileAgo with your File System, the WebDrive must be mapped as a network drive.

1.2.1 Open File Explorer

1.2.2 Navigate to: “This PC”

1.2.3 On the top pane, select the pane element “Computer”.

1.2.4 Select a suitable folder that is not already in use, for example, Z:, and add as the Folder, the path to the WebDrive:

The URL to access the FileAgo installation, is the URL to your FileAgo installation followed with: “/webdrive/myEndPointName”:

HOW TO CONNECT TO FILEAGO THROUGH THE LOCAL FILE SYSTEM

https://myfolder.fileago.com/webdrive/myEndPointName /

← Anslut nätverksenhet

Vilken nätverksmapp vill du ansluta?

Ange enhetsbeteckningen för anslutningen och mappen som du vill ansluta till:

Enhet: S:
Mapp:

Exempel: \\server\resurs

Återanslut vid inloggning

Anslut med andra autentiseringsuppgifter

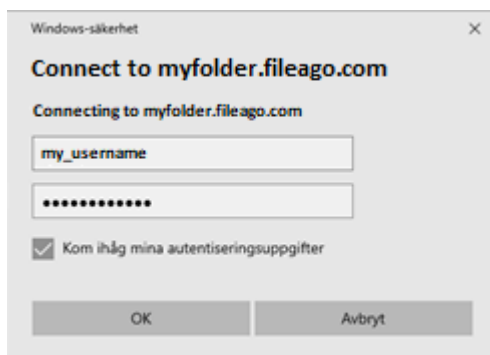
[Anslut till en webbplats som du kan använda för att lagra dokument och bilder.](#)

Slutför

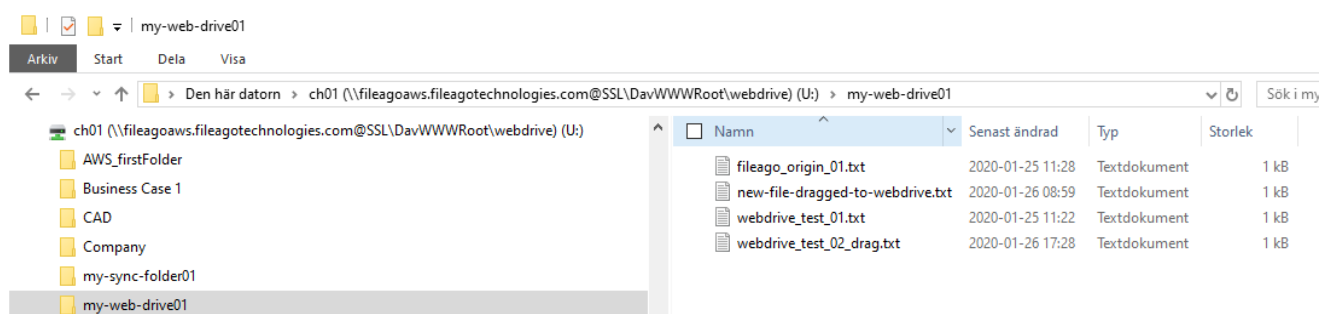
Avbryt

1.2.5 Click “Finish”.

1.2.6 Use your credentials my_username/my_password and check the box “Reconnect at sign-in”



1.2.7 The web path structure on FileAgo is now exposed in File Explorer and is ready to be used



HOW TO CONNECT TO FILEAGO THROUGH THE LOCAL FILE SYSTEM

1.3 Setting up Windows for HTTP transfers

There is no need to do this step for the Production HTTPS setup for FileAgo, therefore go directly to Section 1.2 if you are using HTTPS.

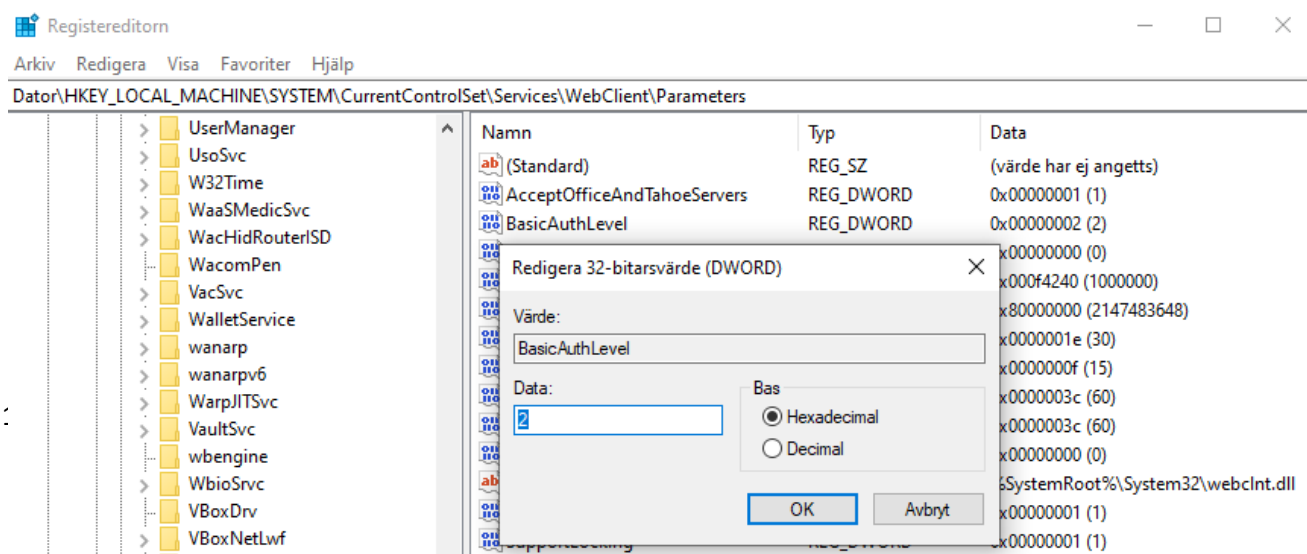
1.3.1 Run Regedit



1.3.2 Browse to the location of the Registry key

HKEY_LOCAL_MACHINE\SYSTEM\CurrentControlSet\Services\WebClient\Parameters\BasicAuthLevel

1.3.3 Change the value of this registry key entry to 2. The change of this value to two is to allow to connect to non-https shares.



1.3.5 Reboot Windows

HOW TO CONNECT TO FILEAGO THROUGH THE LOCAL FILE SYSTEM

1.4 Setting up Windows WebDrive for files larger than 50Mb

If your files are smaller than 50Mb, you can keep the Windows settings as is, therefore go directly to Section 1.2 and follow instructions. For files larger than 50Mb, follow this Section before section 1.2.

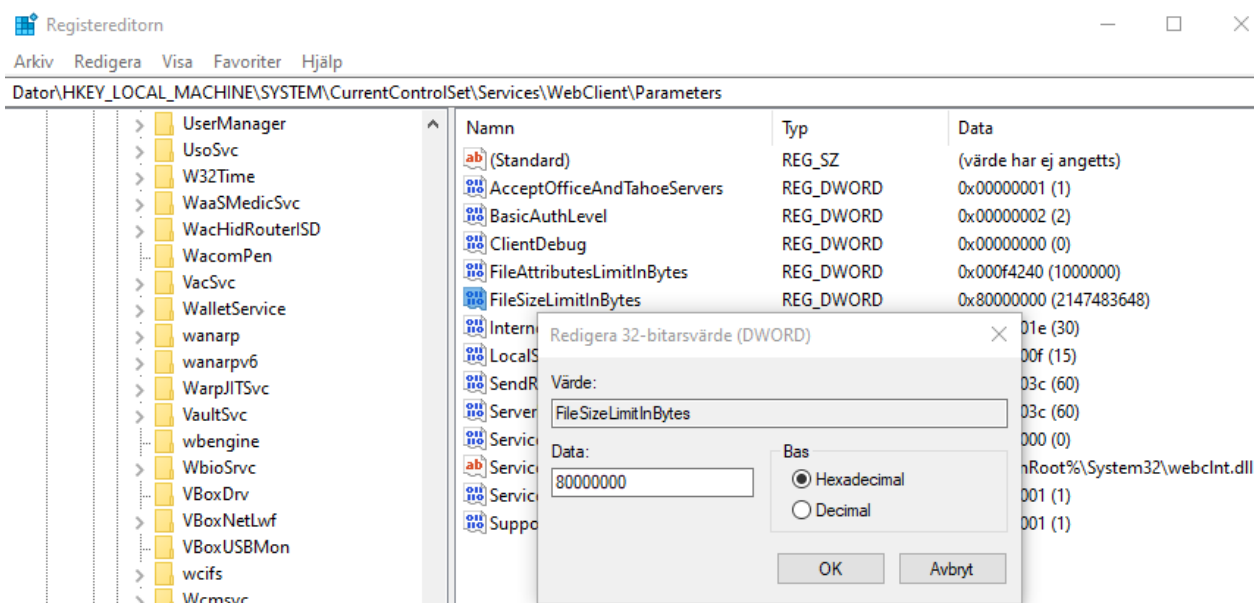
1.4.1 Run Regedit



1.4.2 Browse to the location of the Registry key

HKEY_LOCAL_MACHINE\SYSTEM\CurrentControlSet\Services\WebClient\Parameters\FileSizeLimitInByte

1.4.3 The attribute parameter **FileSizeLimitInBytes** needs to be increased. The default file size is 50MB. We suggest using 2GB for this. Use the checkbox “Decimal” and enter 2147483648 as the “Data:” value, alternatively use the checkbox “Hexadecimal” and enter 80000000.



1.4.4 Reboot Windows

HOW TO CONNECT TO FILEAGO THROUGH THE LOCAL FILE SYSTEM

2. Instructions to set up FileAgo WebDrive on Linux

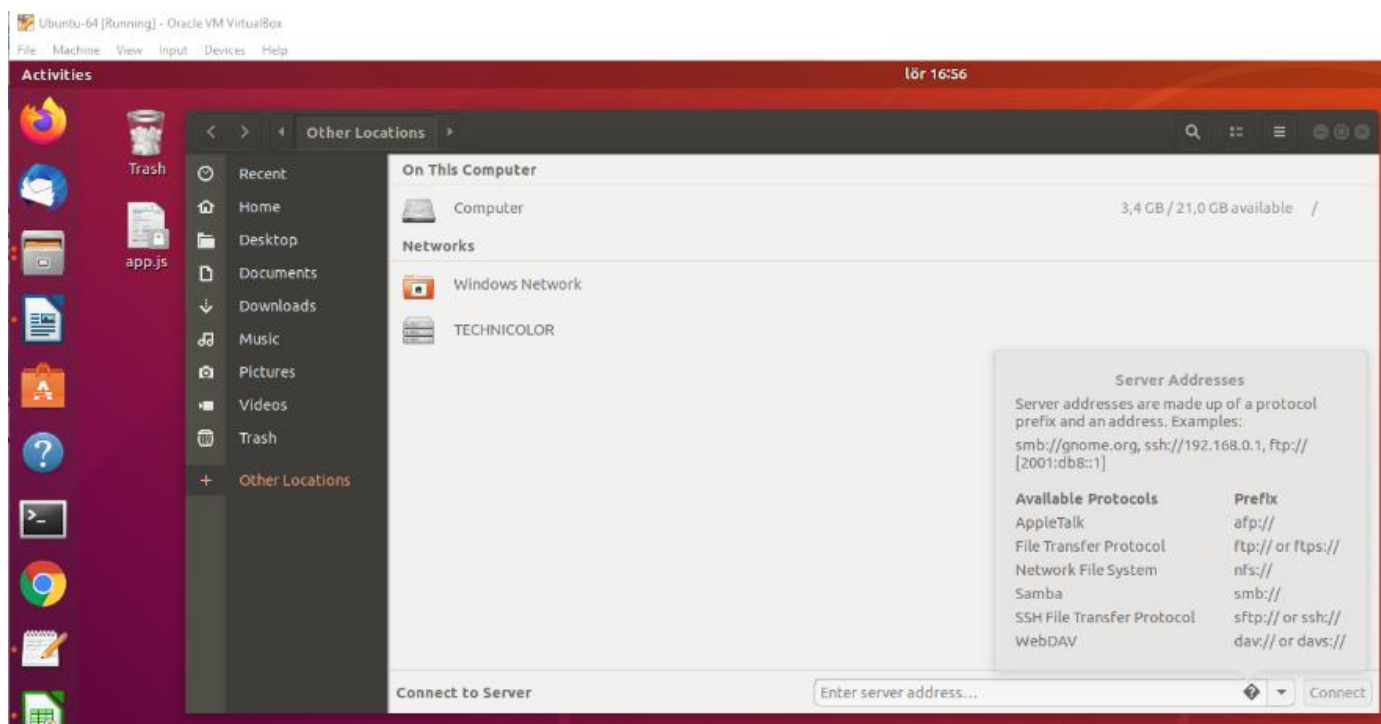
On Linux, the FileAgo Webdrive can be directly accessed through the File Explorer.

From within FileAgo user settings, please set your own endpoint name. The URL to access the FileAgo installation, is the URL to your FileAgo installation followed with: “/webdrive/myEndPointName”:

`https://myfolder.fileago.com/webdrive/myEndPointName /`
Username: my_username
Password: my_password

2.1 Open the File Explorer and select “Other Locations” (Using Ubuntu)

2.2 The interface provides different protocols, use dav:// if using HTTP on a FileAgo development server, use davs:// if using HTTPS on a Production instance of FileAgo.

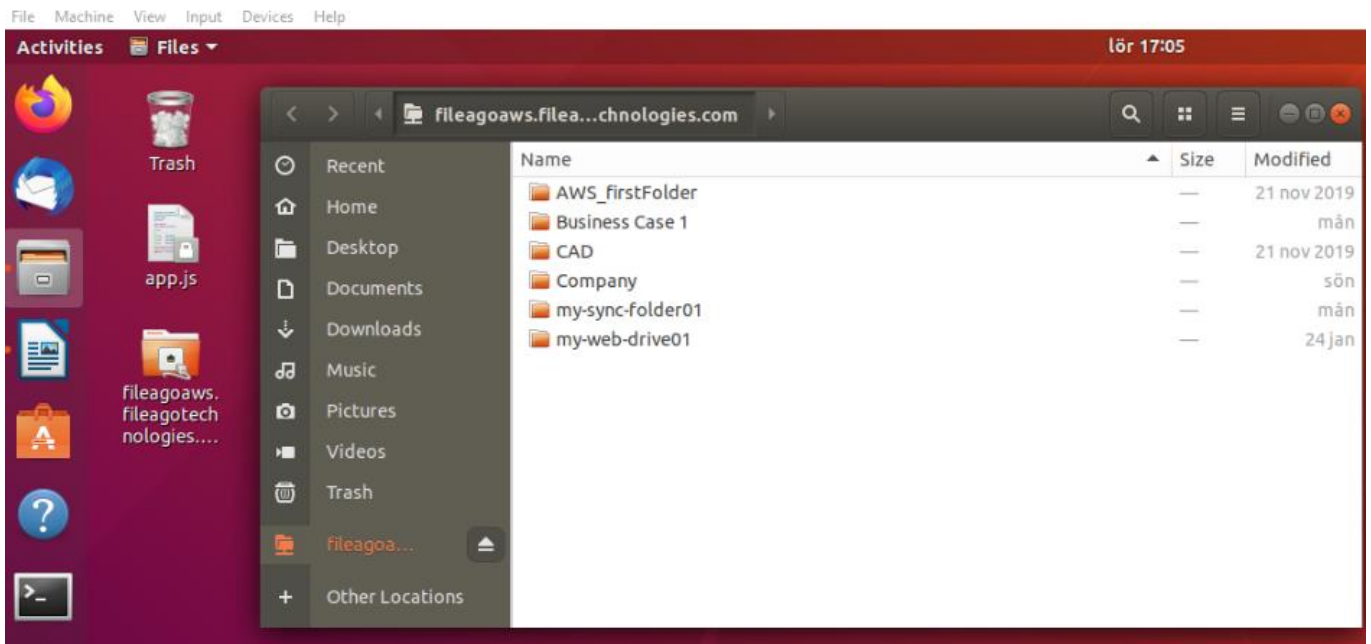


2.3 Enter the webdrive url using dav/davs instead of http/https and connect



HOW TO CONNECT TO FILEAGO THROUGH THE LOCAL FILE SYSTEM

2.4 Enter your username/password and the FileAgo web drive is ready to use



2.5 If you want to connect to FileAgo file system directly from a Linux server, there are many technologies available such as Mint.

One such resource is: <https://community.linuxmint.com/software/view/davfs2>

HOW TO CONNECT TO FILEAGO THROUGH THE LOCAL FILE SYSTEM

3. Instructions to set up FileAgo WebDrive on Mac

On Mac, the FileAgo Webdrive can be directly accessed through Finder

From within FileAgo user settings, please set your own endpoint name. The URL to access the FileAgo installation, is the URL to your FileAgo installation followed with: “/webdrive/myEndPointName”:

`https://myfolder.fileago.com/webdrive/myEndPointName/`

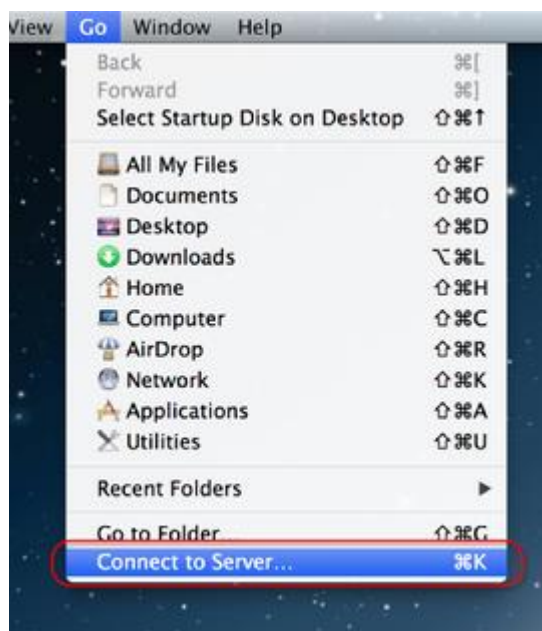
Username: my_username

Password: my_password

3.1 Click Finder on the menu.

3.2 Click GO

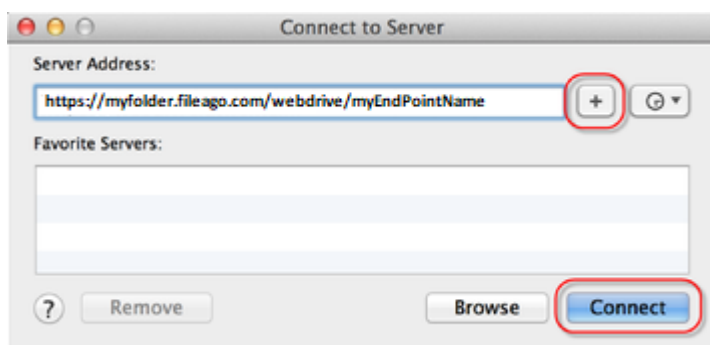
3.3 Click Connect to Server...



3.4 Under Server Address, enter `https://myfolder.fileago.com/webdrive/myEndPointName`

3.5 Click the + icon.

3.6 Click *Connect*





HOW TO CONNECT TO FILEAGO THROUGH THE LOCAL FILE SYSTEM

- 3.7 Enter username/password and click *Connect*
- 3.8 FileAgo is ready to be used through the file system